

3 Mersey Meadows, West Didsbury, Manchester, M20 2GB



JP&Brimelow
ESTATE AGENTS



 4  3  2 

VIDEO TOUR AVAILABLE Rare to the market is this delightful FOUR DOUBLE BEDROOM, DETACHED property. Nestled away on a quiet, exclusive, and leafy cul-de-sac in the sort after area of West Didsbury.

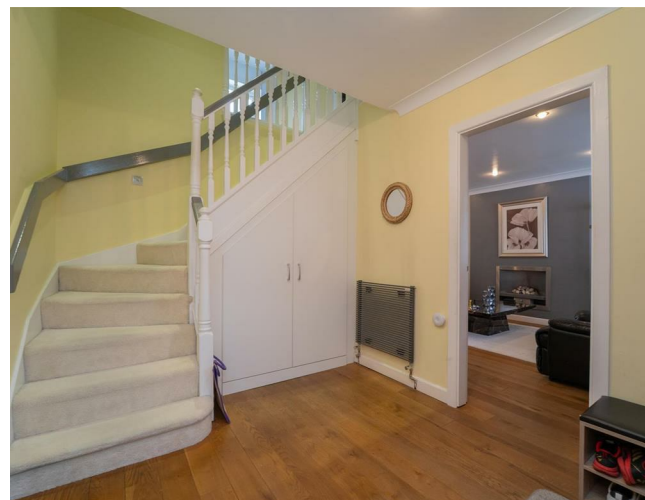
Ideally positioned for all of the restaurants, bars, cafes, and amenities that West Didsbury has to offer, fantastic transport links are close by giving direct access to Chorlton, Manchester City centre, and further afield, excellent schools are close by, and there is direct access to the River Mersey via 'Holly's path' where you can enjoy walks, runs and the open green space.

In brief this extended property comprises of an entrance hall with useful storage cupboard and W.C, a spacious lounge to the front aspect complete with solid wood flooring, a good-sized kitchen/ breakfast room, a utility, and a large conservatory stretching the width of the property, which benefits from air conditioning and offers views and access out into the SOUTH facing garden.

Stairs leading to the first-floor landing reveal three good sized bedrooms, all benefiting from built in wardroes, one benefitting from an en-suite shower room, and two housing air conditioning units. A white three-piece bathroom suite, and sizable principal bedroom complimented by a modern ensuite shower room complete this fantastic home.


Other benefits include gas fired central heating, high ceilings, a double garage, a driveway, and a rear enclosed south facing garden.

£895,000





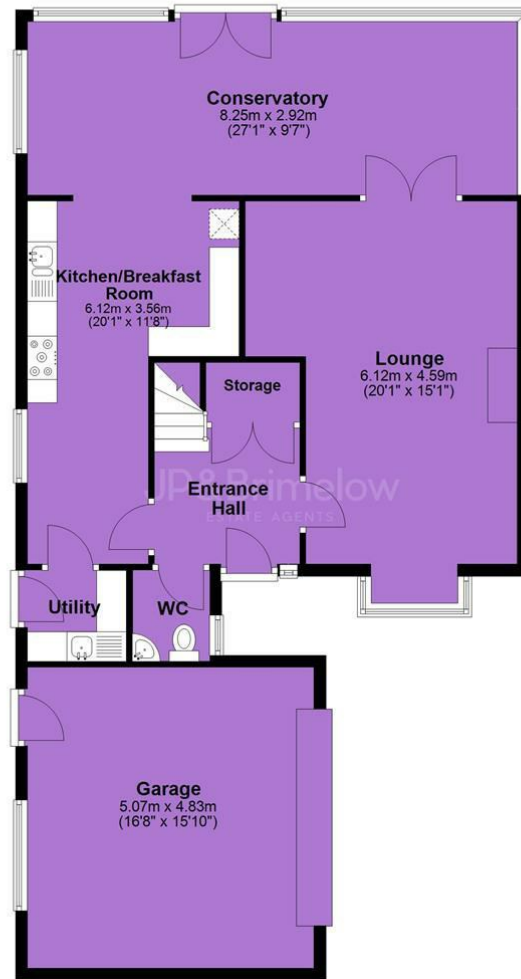
EPC Chart

Energy Efficiency Rating		Current	Potential
Very energy efficient - lower running costs			
(92 plus)	A		
(81-91)	B		
(69-80)	C		
(55-68)	D		
(39-54)	E		
(21-38)	F		
(1-20)	G		
Not energy efficient - higher running costs			
England & Wales		EU Directive 2002/91/EC 	



Tenure: Freehold Council Tax Band: F

Ground Floor



First Floor



JP & Brimelow Estate Agents Ltd
430 Barlow Moor Road, Manchester, M21 8AD
Tel: 0161 8822233
E: sales@jpbrimelow.co.uk www.jpandbrimelow.co.uk



JP & Brimelow
ESTATE AGENTS

NOTICE: JP & Brimelow Estate Agents Ltd for themselves and for the vendors or lessors of this property whose agents they are give notice that:

- (i) the particulars are set out as a general outline only for the guidance of intending purchasers or lessees, and do not constitute, nor constitute part of, an offer or contract;
- (ii) all descriptions, dimensions, references to the condition and necessary permissions for use and occupation, and other details are given in good faith and are believed to be correct but any intending purchasers or tenants should not rely on them as statements or representations of fact but must satisfy themselves by inspection or otherwise as to the correctness of each of them;
- (iii) no person in the employment of JP & Brimelow Estate Agents Ltd has any authority to make or give any representation or warranty whatever in relation to this property.

jpandbrimelowstateagents

@jpandbrimelow

